



HOUSE FOR SALE
LIMELETTE

Bondry 27



PROPRIÉTÉ PRIVÉE
IMMOBILIER RÉSIDENTIEL

ADRESSE

Fond de Bondry, 27
1342 Limelette

PRICES

395.000 €



HOUSE FOR SALE LIMELETTE

| | |
|------------------------|--------------------------|
| Land surface | 178 m² |
| Living space | 160 m² |
| Year of construction | 1976 |
| Number of bedrooms | 3 |
| Surface area bedroom 1 | 20 m² |
| Surface area bedroom 2 | 10 m² |
| Surface area bedroom 3 | 16 m² |
| Number of bathrooms | 1 |
| Number of toilets | 2 |
| Garage | yes |
| Type of heating | individual |



eau office

Clos des Chêneaux 18A 1390
Grez-Doiceau
+32 10 816 800


office

Avenue Reine Astrid 92 bte 2
1310 La Hulpe
+32 2 216 88 00

<https://www.propriete-privee.be> - info@propriete-privee.be



HOUSE FOR SALE LIMELETTE

| | |
|----------------------|---|
| Sewer connection | yes |
| Net cadastral income | 1.303 € |
| EPB |  |
| EPB - Unique code | 20260509006644 |
| EPB - E Spec | 162 kWh/m ² .an |
| EPB - E total | 41.032 kWh/an |
| Availability | 1 |



eau office

Clos des Chêneaux 18A 1390
Grez-Doiceau
+32 10 816 800

office

Avenue Reine Astrid 92 bte 2
1310 La Hulpe
+32 2 216 88 00



HOUSE FOR SALE
LIMELETTE





**HOUSE FOR SALE
LIMELETTE**



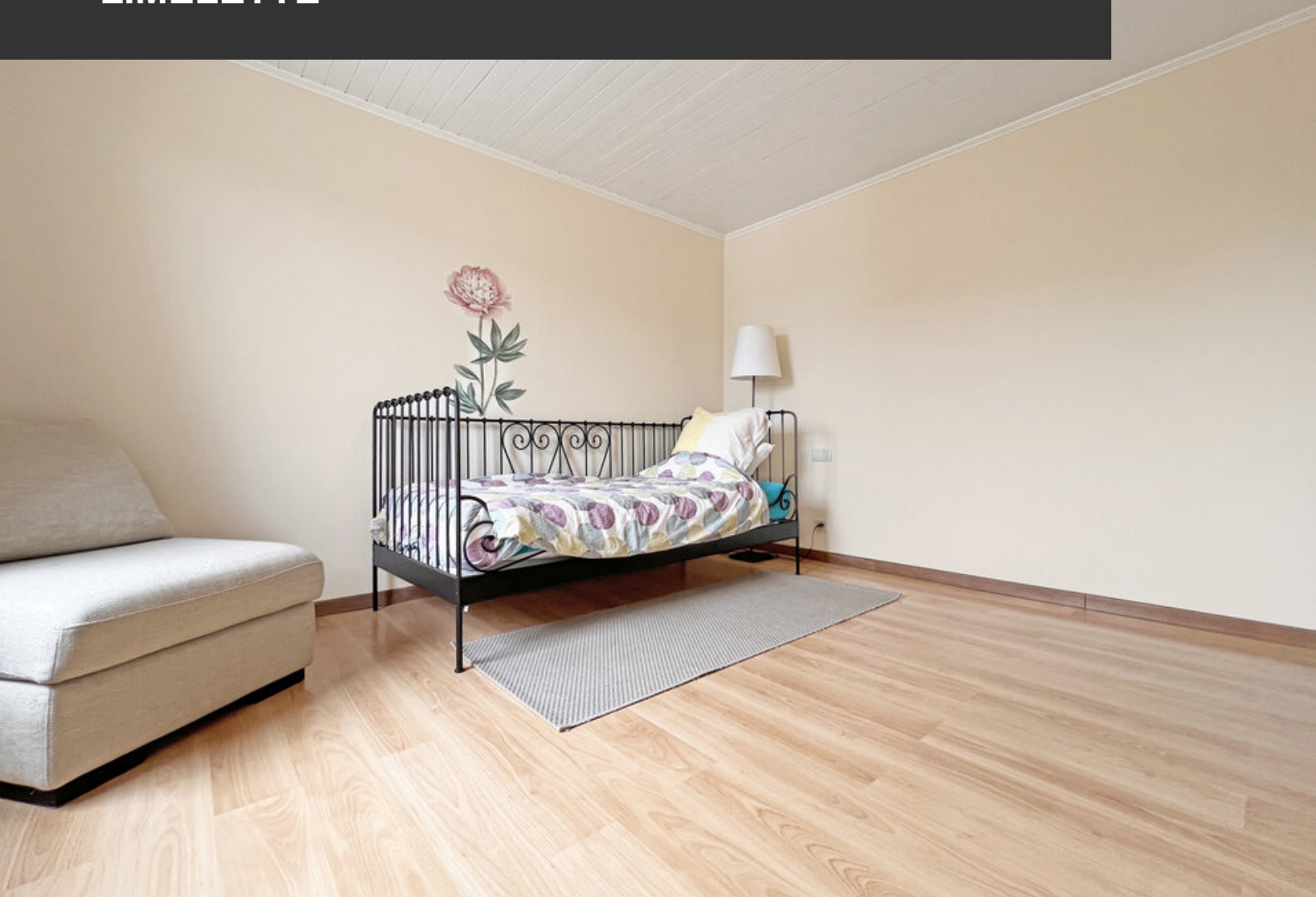


HOUSE FOR SALE
LIMELETTE





HOUSE FOR SALE
LIMELETTE





**HOUSE FOR SALE
LIMELETTE**





HOUSE FOR SALE
LIMELETTE





HOUSE FOR SALE
LIMELETTE

